

# FS COMMERCIAL LANDSCAPE, INC.

# OCTOBER NEWSLETTER

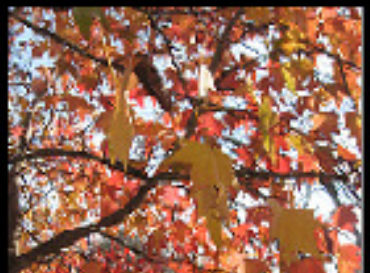
VOLUME III, ISSUE 10 OCTOBER 2, 2009 By: G. John Wood, President



CHINESE PISTACHE



GOLDEN RAIN TREE



LIQUIDAMBAR



CRAPE MYRTLE

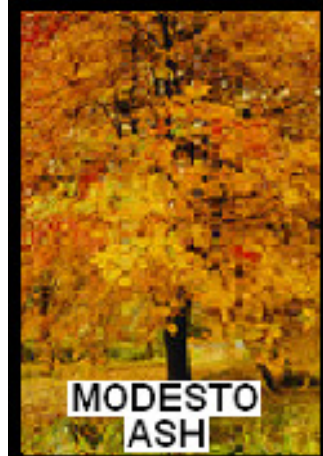
I have so much stuff in my garage that I can only fit one car in it. So my truck sits out in the driveway. There is a large Liquidambar tree branch that hangs out over my truck that the birds love. You can probably guess what my truck looks like – the bird baño. I pulled out a pair of loppers to cut off the branch and my wife says cant you wait till the leaves turn color before you cut it off. Fortunately for her I couldn't reach the branch from the ground with my loppers. I need to bring a pole saw home before it can be cut off. Such is the life of a gardener.

Everyone knows this is the time of year when the trees start turning color. We call it fall, because some people fall down when they are looking up at the trees. As you can tell I am getting quite silly in my old age. Seriously though, this is a fantastic time of year to see trees go through this change of leaf color. I will of course name some of my favorites, and show pictures so you can order them or design your next landscape with some of them, if you are into that sort of thing. I feel like Andy Rooney when I say why do they call it fall anyway?

If you want to see the most spectacular views of entire forests changing color then you need to go to Vermont or New England in the fall!!! I went once and it was awesome, of course I'm a gardener and I like that sort of thing.



SILVER MAPLE



MODESTO  
ASH



EVERGREEN  
PEAR

## GARDENING TIP OF THE MONTH

HOW DO YOU  
FIX A BROKEN  
JACK-O-LANTERN?



WITH A PUMPKIN PATCH!

Happy Halloween